

This information is based on our present state of knowledge and is intended to provide general notes on our products and their uses. It should not therefore be construed as a warranty of specific properties of the products described or a warranty for fitness for a particular purpose.

Classified according to EU Directive 1999/45/EC
For further information see our "Material Safety Data Sheets".

Edition 3, 08.2007

The latest revised edition of this brochure is the English version, which is always published on our web site www.uddeholm.com



SS-EN ISO 9001
SS-EN ISO 14001

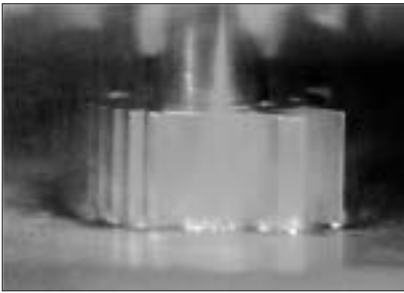
Contents

Introduction	3
The basic principles of EDM	4
The effects of the EDM process on tool steels	4
Measuring the effects	6
Achieving best tool performance	9
Polishing by EDM	11
Summary	11

Introduction

The use of Electrical Discharge Machining (EDM) in the production of forming tools to produce plastics mouldings, die castings, forging dies etc., has been firmly established in recent years. Development of the process has produced significant refinements in operating technique, productivity and accuracy, while widening the versatility of the process.

Wire EDM has emerged as an efficient and economic alternative to conventional machining of apertures in many types of tooling, e.g. blanking dies, extrusion dies and for cutting external shapes, such as punches.



Special forms of EDM can now be used to polish tool cavities, produce undercuts and make conical holes using cylindrical electrodes.

EDM continues to grow, therefore, as a major production tool in most tool making companies, machining with equal ease hardened or annealed steel.

Uddeholm Tooling supplies a full range of tool steels noted for consistency in structure. This factor, coupled with very low sulphur levels ensures consistent EDM performance.

This brochure gives information on:

- **The basic principles of EDM**
- **The effects of the EDM process on tool steels**
- **Achieving best tool performance**

The basic principles of EDM

Electrical discharge machining (spark erosion) is a method involving electrical discharges between an anode (graphite or copper) and a cathode (tool steel or other tooling material) in a dielectric medium. The discharges are controlled in such a way that erosion of the tool or work piece takes place. During the operation, the anode (electrode) works itself down into the work-piece, which thus acquires the same contours as the former.

The dielectric, or flushing liquid as it is also called, is ionized during the course of the discharges. The positively charged ions strike the cathode, whereupon the temperature in the outermost layer of the steel rises so high (10–50,000°C/ 18–90,000°F) as to cause the steel there to melt or vaporize, forming tiny drops of molten metal which are flushed out as “chippings” into the dielectric. The craters (and occasionally also “chips” which have not separated completely) are easily recognized in a cross section of a machined surface. See figure 1.

Four main factors need to be taken into account when considering the operating parameters during an EDM operation on tool steel:

- the stock-removal rate
- the resultant surface finish
- electrode wear
- the effects on the tool steel.

The influence of the EDM operation on the surface properties of the machined material, can in unfavour-

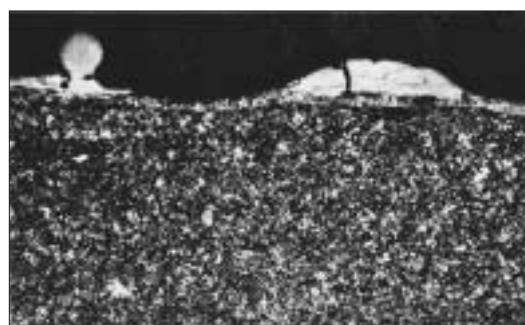


Fig.1. A “rough-machined” EDM surface with a cross section through chips and craters. Material: Uddeholm Orvar 2 Microdized.

able circumstances jeopardize the working performance of the tool. In such cases it may be necessary to subordinate the first three factors, when choosing machining parameters, in order to optimize the fourth.

The effects of the EDM process on tool steels

The influence of spark erosion on the machined material is completely different to that of conventional machining methods.

As noted, the surface of the steel is subjected to very high temperatures, causing the steel to melt or vaporize. The effect upon the steel surface has been studied by Uddeholm Tooling to ensure that the tool maker may enjoy the many benefits of the EDM process, while producing a tool that will have a satisfactory production life.

In the majority of cases, it has been impossible to trace any influence at all on the working function of the spark-eroded tool. However, it has been observed that a trimming tool, for example, has become more wear resistant, while in some cases tool failure has occurred prematurely on changing from conventional machining to EDM. In other cases, phenomena have occurred during the actual electrical discharge machining that have caused unexpected defects on the surface of the tool. This due to the fact that the machining has been carried out in an unsuitable manner.

“Surface strength”— an important factor

All the changes that can be observed are due to the enormous temperature rise which occurs in the surface layer.

In the surface layer, it has been observed that the four (main) factors associated with the all-important “surface strength” of the steel are affected by this temperature increase:

- the microstructure
- the hardness
- the stress condition
- carbon content.

Figure 2 shows a section from a normal rough-spark-machined surface with the typical, different structural changes.

Melted and resolidified layer

The **melted and resolidified layer** produced during the EDM process is also referred to as the “white zone”, since generally no etching takes place in these areas during metallographic preparation. Figure 3, nevertheless, shows clearly that it is a rapidly solidified layer, where long pillar crystals have grown straight out from the surface of the metal during solidification. A fracture occurring in this layer

invariably follows the direction of the crystals. In normal rough machining, this layer has a thickness of about 15–30 μm .

The carbon content in the surface layer can also be affected, for instance, by carburization from the flushing liquid or from the electrode, but decarburization can also occur.

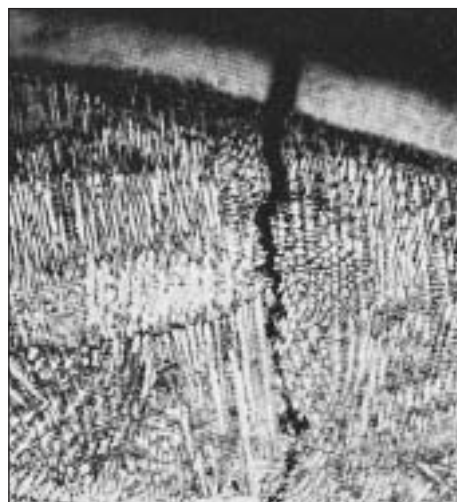
Rehardened layer

In the **rehardened layer**, the temperature has risen above the austenitizing (hardening) temperature and martensite has been formed. This martensite is hard and brittle.

Tempered layer

In the **tempered layer**, the steel has not been heated up so much as to reach hardening temperature and the only thing that has occurred is tempering-back. The effect naturally decreases towards the core of the material – see the hardness curve in figure 2.

In order to study the structural changes incurred with different machining variables, different tool steels—see table 1—were “rough-machined” and “fine-machined” with graphite electrodes.



1000 x

Fig. 3. Pillar crystals formed during solidification.

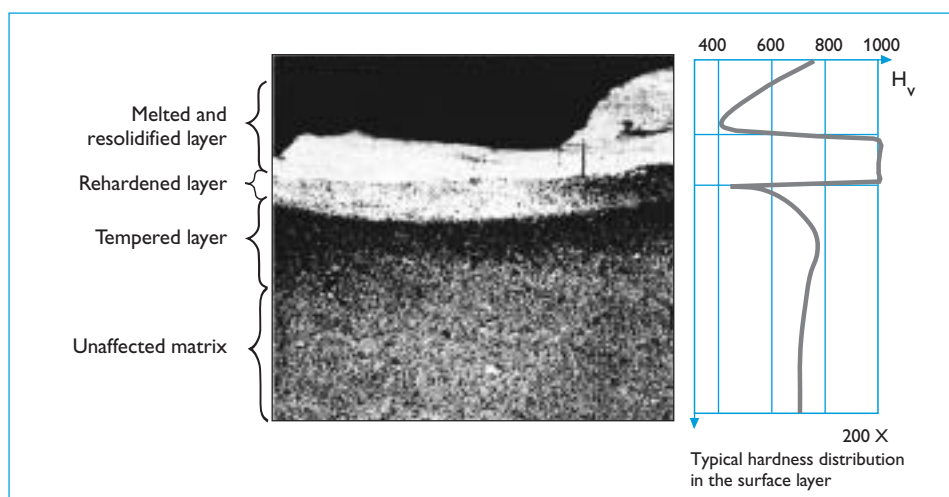


Fig. 2. Section from a spark-machined surface showing changes in structure. Material: Uddeholm Rigor, hardened to 57 HRC.

Uddeholm steel grade	AISI	Austenitizing, time 20 min		Tempering, time 2 x 30 min		Hardness	
		Temperature °C	Temperature °F	Temperature °C	Temperature °F	Hardened HRC	Annealed HB
ARNE	O1	810	1490	220	430	60	190
CALMAX	–	960	1760	200	392	58	200
RIGOR	A2	940	1725	220	430	60	–
SVERKER 21	D2	1020	1870	250	480	60	220
IMPAX SUPREME	P20	850	1560	580	1075	30	–
ORVAR SUPREME	H13	1025	1875	560	1040	50	180

Table 1. The tool steels were tested in the hardened and tempered condition, and some of them also in the annealed condition.

Note: As Uddeholm Corrax is a precipitation hardening steel the EDM surface has different characteristics. The “white layer” consists of melted and resolidified material with a hardness of approx. 34 HRC. There will be no other heat affected zone of importance.

Measuring the effects

The **thicknesses** of the heat-affected zones have been measured. The **hardnesses** in these zones have also been measured, as have **crack frequencies** and **crack depths**. **Strength values** have been obtained through bending tests.

The **layer thicknesses** appear to be largely independent of both steel grade and electrode material. On the other hand, there is a definite difference between the specimens which have been hardened and those which were in the softannealed condition. Figure 4 shows, in the form of graphs, the layer thicknesses and fissure frequency with different pulse durations for Uddeholm Orvar Supreme.

In the annealed material, the zones are thinner and the fissures fewer. The brittle, hardened zone is scarcely present at all (figure 4b).

The layer thicknesses can vary considerably, from 0 μm to maximum values slightly below the R_{max} specified in the machining directions. In the rough-machining stages ($\tau_1 \geq 100\mu$ sec), the thicknesses of the layers vary far more substantially than in the fine-machining stages.

The thickness of both the melted and the hardened zone increases with spark duration, which appears to be the most important single controlling variable. Figure 5 shows

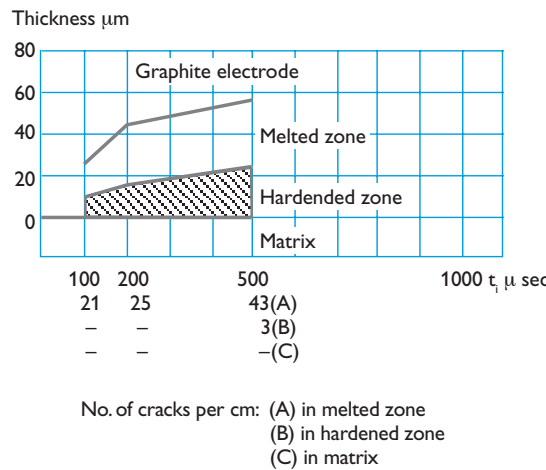


Fig. 4a. Layer thicknesses and fissure frequency in the surface layer in electrical discharge machining of hardened (52 HRC) Uddeholm Orvar Supreme at different pulse durations.

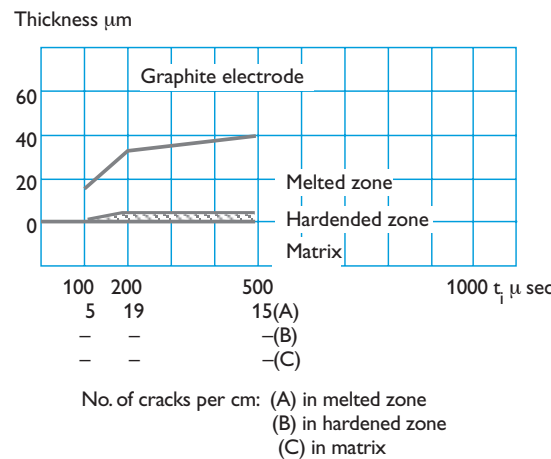


Fig. 4b. As above, but for electrical discharge machining of Uddeholm Orvar Supreme in the annealed condition.

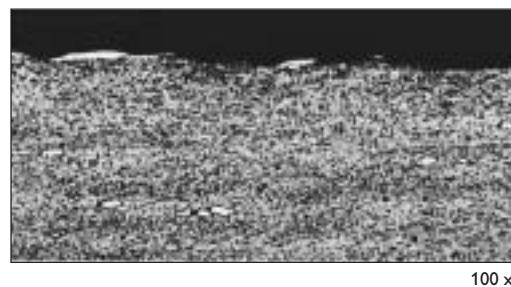
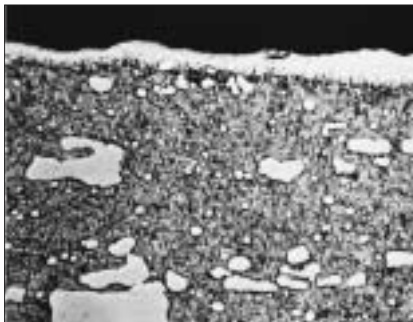


Fig. 5. Fine-machined Uddeholm Rigor, pulse duration 10μ sec.

the beneficial effect of “fine-finishing”, i.e. to produce a very thin re-melted and heat-affected zone.

Structures of spark-machined layers

With longer pulse duration, the heat is conducted more deeply into the material. Higher current intensity and density (and thus spark energy) do, indeed, give a higher “amount of heat” in the surface, but the time taken for the heat to diffuse, nevertheless, appears to have the greatest significance. The pictures below show how the surface zones are changed in Uddeholm Sverker 21 (in hardened and tempered condition) with different pulse durations and electrode materials.



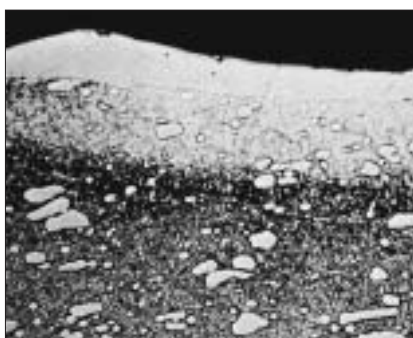
$\tau_i = 10 \mu\text{s}$. Magnification 500 x

Figur 6a. Copper electrode



$\tau_i = 10 \mu\text{s}$. Magnification 500 x

Figur 6b. Graphite electrode



$\tau_i = 100 \mu\text{s}$. Magnification 500 x

Figur 6c. Graphite electrode

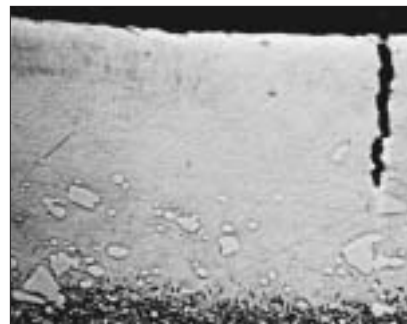
The cause of “arcing”

Short off-times, or pause times, give more sparks per unit of time and thus more stock removal. During the off-time, the dielectric fluid



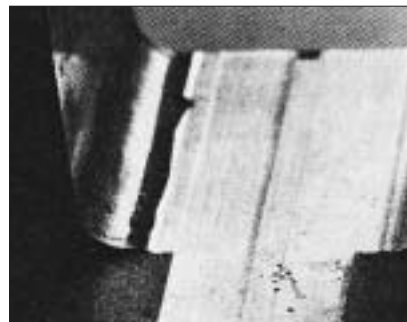
$\tau_i = 200 \mu\text{s}$. Magnification 500 x

Figur 6d. Copper electrode



$\tau_i = 500 \mu\text{s}$. Magnification 500 x

Figur 6e. Graphite electrode



Figur 7. The suspected “pores” can be seen on the surface of the tool 1:1



Figur 8. A section through one of the suspected “pores” 65 x

must have time to become de-ionized. Too short an off-time can result in double sparking “ignitions” which lead to constantly burning arcs between the electrode and the work piece, resulting in serious surface defects. The risk of arcing is increased if flushing conditions for the dielectric fluid are difficult.

As a result of “arcing”, i.e. a condition in which arcs are formed between local parts of the electrode and the workpiece, large craters or “burns” are formed in the surface. These have frequently been confused with slag inclusions or porosity in the material. Figures 7 and 8 show the surface of a tool with a section through one of the suspected “pores”.

One of the primary causes of this type of defect is inadequate flushing, or machining of narrow slots, etc., resulting in chips and other loose particles forming a bridge between the electrode and the workpiece. The same effect can be obtained with a graphite electrode which bears traces of foreign material. On modern machines featuring so-called adaptive current control, the risk of “arcing” has been eliminated.

Fissure frequency also increases with pulse duration

With times in excess of 100µ sec, all steels reveal several cracks in the melted layer. High-carbon and/or air-hardening steels show the highest frequency of fissures. The annealed specimens contain no cracks at all in the matrix.

The number of cracks which continue down into the hardened zone is roughly 20%, while only a very few cracks penetrate into the matrix. In the matrix, the fissure depth is seldom more than about some tens of a µm. Here too, it applies that cracks in the matrix are mainly encountered in the highly-alloyed cold-working steels. Table 2 shows the occurrence rate of fissures in a number of tested tool steels.

The difference in **stock-removal rate** amounts to a maximum of approx. 15% between the different grades of tool steel with the same machine setting data.

The **hardnesses** in the different layers can also vary considerably, but in principle the same pattern applies to all grades. Figure 9 shows a typical hardness distribution.

	Melted zone	Hardened zone	Matrix
High-alloy cold-work steel UDDEHOLM SVERKER type	20–50	2–10	0–5
Hot-work steel UDDEHOLM ORVAR type	10–40	2–5	0–2
Cold-work steels UDDEHOLM RIGOR and UDDEHOLM ARNE types	10–30	0–5	0–2
Plastic-moulding steel UDDEHOLM IMPAX SUPREME type	0–5	0–2	0

Table 2. The table shows the occurrence rate of fissures.

The difference in hardness and volume between the layers gives rise to stresses which, upon measurement, have been found to have the same depth as the affected surface layers. These stresses can be substantially reduced by extra heat-treatment operations.

Renewed tempering (235°C/455°F 30 min) of the specimen in figure 9 resulted in lowering of the hardness level to the curve drawn with a broken line.

If electrical discharge machining is properly performed with a final fine-machined stage, surface defects are largely eliminated. If this is not possible for one reason or another, or if it is necessary for all effects to

be eliminated, some different related operations can be used:

- **Stress-relief tempering** at a tempering temperature approx. 15°C (30°F) lower than that previously used tempering temperature, lowers the surface hardness without influencing the hardness of the matrix.
- **Grinding or polishing** will remove both the surface structure and cracks, depending of course on how deeply it is done (approx. 5–10 µm in fine-machining).

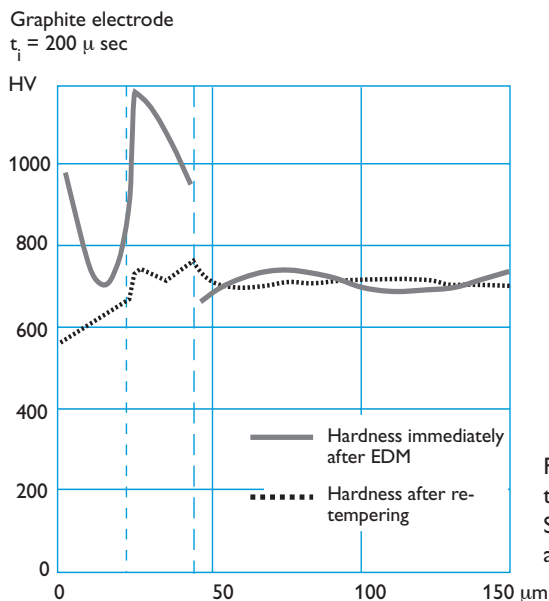


Fig. 9. Typical hardness distribution in hardened Uddeholm Sverker 21 immediately after EDM and then after re-tempering.

Bending test

To evaluate the likely effect of the remelted layer, surface irregularities and cracks produced in the EDM process on the strength of a tool, a bending test was carried out. Various combinations of EDM surface finish and post treatments, e.g. stress-relieving/polishing, were tested on 5 mm square test pieces of Rigor at 57 HRC. The test pieces were spark-machined on one face to different EDM stages and bent severely, with the EDM surface on the outside of the bend.

Figure 10 shows that the sample with a fine-spark machined finish which had been polished afterwards gave the best result. The rough spark-machined sample, without any post treatment, had the lowest bending strength.

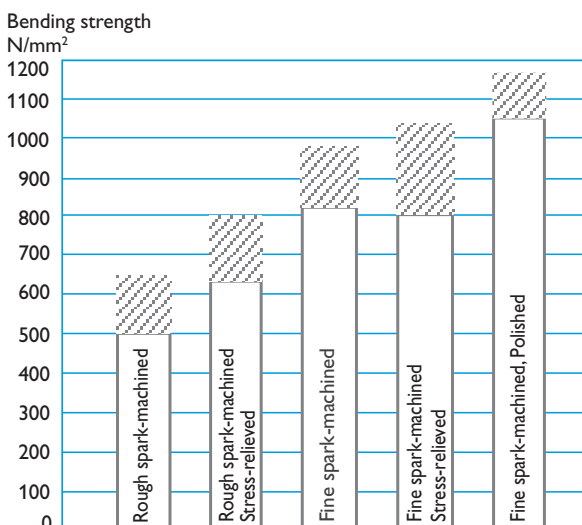


Fig. 10. Bending strength at different EDM stages and with different subsequent operation. Material Uddeholm Rigor 57 HRC. The shaded areas show the spread of the results measured.

Background to the bending test results

The hard, re-solidified rehardened layers cause, in the first instance, those cracks which are formed upon application of the load and in the second instance those which were already present to act as initiators of failure in the matrix. At 57 HRC, the matrix is not tough enough to stop the cracks from growing and consequently the failure occurs already on the elastic part of the load curve. Normally, there should have been a certain amount of plastic bending of a test bar in this material.

Achieving best tool performance

EDM using solid electrodes (copper/graphite)

As noted, in most cases where the EDM process has been carefully carried out no adverse effect is experienced on tool performance. As a precautionary measure, however, the following steps are recommended:

EDM OF HARDENED AND TEMPERED MATERIAL

- A Conventional machining
- B Hardening and tempering
- C Initial EDM, avoiding “arcing” and excessive stock removal rates. Finish with “fine-sparking”, i.e. low current, high frequency.
- D (i) Grind or polish EDM surface
- or D (ii) Temper the tool at 15°C (30°F) lower than the original tempering temperature.
- or D (iii) Choose a lower starting hardness of the tool to improve overall toughness.

EDM OF ANNEALED MATERIAL

- A Conventional machining
- B Initial EDM, as C above.
- C Grind or polish EDM surface. This reduces the risk of crack formation during heating and quenching. Slow pre-heating, in stages, to the hardening temperature is recommended.

Note: When EDM'd in solution annealed condition the toughness of Uddeholm Corrax is not affected.

It is recommended that all EDM'ing of Uddeholm Corrax is done after aging since an aging after EDM'ing will reduce the toughness.

It is recommended that the “white layer” is removed by grinding, stoning or polishing.

Wire EDM

The observation made about the EDM surface in earlier pages are also mostly applicable to the wire EDM-process.

The affected surface layer, however, is relatively thin (<10 μm) and can be compared more to “fine-sparking” EDM. Normally there are no observable cracks in the eroded surface after wire erosion. But in certain cases another problem has been experienced.

After heat treating a through hardening steel the part contains high stresses (the higher the tempering temperature, the lower the stresses).



Fig. 12. This block of D2 steel, approx. 50 x 50 x 50 mm (2" x 2" x 2"), cracked during the wire EDM operation.

These stresses take the form of tensile stresses in the surface area and compressive stresses in the centre and are in opposition to each other. During the wire erosion process a greater or lesser amount of steel is removed from the heat-treated part. Where a large volume of steel is removed, this can sometimes lead to distortion or even cracking of the part. The reason is that the stress balance in the part is disturbed and tries to reach an equilibrium again. The problem of crack formation is usually only encountered in relatively thick cross section, e.g. over 50 mm (2") thick. With such heavier sections, correct hardening and double tempering is important.

In certain cases the risk can be reduced through different precautions.

- 1: To lower the overall stress level in the part by tempering at a high temperature. This assumes the use of a steel grade with high resistance to tempering.
- 2: By drilling several holes in the area to be removed and to connect them by saw-cutting, before hardening and tempering. Any stresses released during heat treatment are then taken up in the pre-drilled and sawn areas, reducing or eliminating the risk of distortion or cracking during wire-erosion. Fig. 13 illustrates how such pre-cutting may be done.

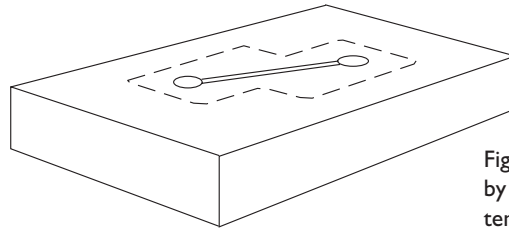


Fig. 13. Pre-drilled holes connected by a saw-cut, before hardening and tempering, will help to prevent distortion or cracking when wire eroding thick sections.



Fig. 11. Wire erosion of a hardened and tempered tool steel blanking die.

Wire erosion of cutting punches

When producing a cutting punch by wire erosion, it is recommended (as with conventional machining) to cut it with the grain direction of the tool steel stock in the direction of the cutting action. This is not so important when using PM steels due to their non-directional grain structure.

Polishing by EDM

Today some manufacturers of EDM-equipment offer, by a special technique, possibilities to erode very fine and smooth surfaces. It is possible to reach the surface finish of about 0,2–0,3 μm . Such surfaces are sufficient for most applications. The greatest advantages are when complicated cavities are involved. Such cavities are difficult, time consuming and therefore expensive to polish manually, but can be conveniently done by the EDM-machine during a night-shift, for example.

Investigations made on our grades Uddeholm Impax Supreme, Uddeholm Orvar Supreme, Uddeholm Stavax ESR and Uddeholm Rigor show that the hard re-melted white

layer produced is very thin and equal in the these grades. The thickness is about 2–4 μm . Since there is no sign of any heat-affected layer, the influence of the EDM on mechanical properties is negligible.

Summary

In summing up it can be said that properly executed electrical discharge machining, using a rough and a fine machining stage in accordance with the manufacturer's instruction, eliminates the surface defects obtained in rough machining. Naturally, certain structural effects will always remain, but in the vast majority of cases these are insignificant, provided that the machining process has otherwise been normal. Structural effects, more-over, need not necessarily be regarded as entirely negative. In certain cases the surface structure, i.e. the rehardened layer, has—on account of its high hardness—improved the resistance of the tool to abrasive wear. In other cases it has been found that the cratered topography of the surface is better able to retain lubricant than conventional surfaces, resulting in a longer service life. If difficulties

in connection with the working performance of spark-machined tools should arise, however, there are some relatively simple extra operations that can be employed, as indicated above.

A slightly striped appearance has been re-ported in materials rich in carbides, such as high-carbon cold-work steels and high-speed steels, where there is always a certain amount of carbide segregation or in material with high sulphur content.

The difference in bending strength between rough-spark-machined and fine-spark-machined test pieces is largely due to the difference in the distribution of the cracks and to the presence of the in spots distributed white layer on the fine-spark-machined specimens. The rougher surface finish of the rough-machined specimen has not really been significant. Regardless of circumstances, such surface irregularities are relatively harmless as crack initiators compared with the solidification cracks. During the polishing of the fine-machined test piece which was carried out, the depth of the white and rehardened layer was merely reduced and not completely eliminated. Further polishing would probably result in complete restoration of the bending strength.

Highly stressed tools and parts thereof, e.g. very thin sections that are far more liable to bending, can justify an extra finishing operation.

The lower the hardness in the matrix, the less sensitive the material will be to adverse effects on the strength as a result of electrical discharge machining. Lowering of the hardness level of the entire tool can, therefore, be another alternative.



Fig. 14. This Uddeholm Stavax ESR mould insert was finished by EDM "polishing".

Europe

Austria

Representative office

UDDEHOLM
Albstraße 10
DE-73765 Neuhausen
Telephone: +49 7158 9865-0
www.uddeholm.de

Belgium

UDDEHOLM
Europark Oost 7
B-9100 Sint-Niklaas
Telephone: +32 3 780 56 20
www.uddeholm.be

Croatia

BÖHLER UDDEHOLM Zagreb
d.o.o za trgovinu
Zitnjak b.b
10000 Zagreb
Telephone: +385 1 2459 301
Telefax: +385 1 2406 790
www.bohler-uddeholm.hr

Czech Republic

BÖHLER UDDEHOLM CZ s.r.o.
Division Uddeholm
U Silnice 949
161 00 Praha 6, Ruzyne
Telephone: +420 233 029 850.8
www.uddeholm.cz

Denmark

UDDEHOLM A/S
Kokmose 8, Bramdrupdam
DK-6000 Kolding
Telephone: +45 75 51 70 66
www.uddeholm.dk

Estonia

UDDEHOLM TOOLING AB
Silikatsiidi 7
EE-11216 Tallinn
Telephone: +372 655 9180
www.uddeholm.ee

Finland

OY UDDEHOLM AB
Ritakuja 1, PL 57
FI-01741 VANTAA
Telephone: +358 9 290 490
www.uddeholm.fi

France

Head office
UDDEHOLM
Z.I. de Mitry-Compans, 12 rue Mercier,
FR-77297 Mitry Mory Cedex
Telephone: +33 (0)1 60 93 80 10
www.uddeholm.fr

Branch offices

UDDEHOLM S.A.
77bis, rue de Vesoul
La Nef aux Métiers
FR-25000 Besançon
Telephone: +33 (0)381 53 12 19

LE POINT ACIERS
UDDEHOLM - Aciers à outils
Z.I. du Recou, Avenue de Champlevert
FR-69520 GRIGNY
Telephone: +33 (0)4 72 49 95 61

LE POINT ACIERS
UDDEHOLM - Aciers à outils
Z.I. Nord 27, rue François Rochnax
FR-01100 OYONNAX
Telephone: +33 (0)4 74 73 48 66

Germany

Head office
UDDEHOLM
Hansaallee 321
DE-40549 Düsseldorf
Telephone: +49 211 5351-0
www.uddeholm.de

Branch offices

UDDEHOLM
Falkenstraße 21
DE-65812 Bad Soden/TS
Telephone: +49 6196 6596-0

UDDEHOLM
Albstraße 10
DE-73765 Neuhausen
Telephone: +49 7158 9865-0

UDDEHOLM
Friederikenstraße 14b
DE-06493 Harzgerode
Telephone: +49 39484 727 267

Great Britain

UDDEHOLM DIVISION
BOHLER-UDDEHOLM (UK) LIMITED
European Business Park
Taylors Lane, Oldbury
GB-West Midlands B69 2BN
Telephone: +44 121 552 5511
Telefax: +44 121 544 2911
www.uddeholm.co.uk

Greece

STASSINOPOULOS-UDDEHOLM
STEEL TRADING S.A.
20, Athinon Street
GR-Piraeus 18540
Telephone: +30 210 4172 109
www.uddeholm.gr

SKLERO S.A.
Heat Treatment and Trading of Steel
Uddeholm Tool Steels
Industrial Area of Thessaloniki
P.O. Box 1123
GR-57022 Sindos, Thessaloniki
Telephone: +30 2310 79 76 46
www.sklero.gr

Hungary

UDDEHOLM TOOLING/BOK
Dunaharaszti, Jedlik Ányos út 25
HU-2331 Dunaharaszti 1. Pf. 110
Telephone/fax: +36 24 492 690
www.uddeholm.hu

Ireland

Head office:
UDDEHOLM DIVISION
BOHLER-UDDEHOLM (UK) LIMITED
European Business Park
Taylors Lane, Oldbury
UK-West Midlands B69 2BN
Telephone: +44 121 552 5511
Telefax: +44 121 544 2911
www.uddeholm.co.uk
Dublin:
Telephone: +353 1845 1401

Italy

UDDEHOLM
Divisione della Bohler Uddeholm
Italia S.p.A.
Via Palizzi, 90
IT-20157 Milano
Telephone: +39 02 39 49 211
www.uddeholm.it

Latvia

UDDEHOLM TOOLING LATVIA SIA
Piedrujas Street 7
LV-1035 Riga
Telephone: +371 7 702133
Telefax: +371 7 185079

Lithuania

UDDEHOLM TOOLING AB
BE PLIENAS IR METALAI
T. Masiulio 18B
LT-52459 Kaunas
Telephone: +370 37 370613, -669
www.besteel.lt

The Netherlands

UDDEHOLM
Isolatorweg 30
NL-1014 AS Amsterdam
Telephone: +31 20 581 71 11
www.uddeholm.nl

Norway

UDDEHOLM A/S
Jernkroken 18
Postboks 85, Kalbakken
NO-0902 Oslo
Telephone: +47 22 91 80 00
www.uddeholm.no

Poland

BOHLER UDDEHOLM POLSKA
Sp. z o.o./Co. Ltd.
ul. Kolejowa 291, Dziekanów Polski,
PL-05-092 Lomianki
Telephone: +48 22 429 2260, -203, -204
www.uddeholm.pl

Portugal

F RAMADA Aços e Industrias S.A.
P.O. Box 10
PT-3881 Ovar Codex
Telephone: +351 256 580580
www.ramada.pt

Romania

BÖHLER-UDDEHOLM Romania SRL
Atomistilor Str. No 96-102
077125 - com. Magurele, Jud. Ilfov.
Telephone: +40 214 575007
Telefax: +40 214 574212

Russia

UDDEHOLM TOOLING CIS
9A, Lipovaya Alleya, Office 509
RU-197183 Saint Petersburg
Telephone: +7 812 6006194
www.uddeholm.ru

Slovakia

Bohler-Uddeholm Slovakia s.r.o.
divizia UDDEHOLM
Čsl.Armády 5622/5
SK-036 01 Martin
Telephone: +421 (0)434 212 030
www.uddeholm.sk

Slovenia

Representative office
UDDEHOLM
Divisione della Bohler Uddeholm
Italia S.p.A.
Via Palizzi, 90
IT-20157 Milano
Telephone: +39 02 39 49 211
www.uddeholm.it

Spain

Head office
UDDEHOLM
Guifré 690-692
ES-08918 Badalona, Barcelona
Telephone: +34 93 460 1227
www.acerosuddeholm.com

Branch office

UDDEHOLM
Barrio San Martín de Arteaga,132
Pol.Ind. Torrelarragoiti
ES-48170 Zamudio (Bizkaia)
Telephone: +34 94 452 13 03

Sweden

Head office
UDDEHOLM TOOLING SVENSKA AB
Aminogatan 25
SE-431 53 Mölndal
Telephone: +46 31 67 98 50
www.uddeholm.se

Branch offices

UDDEHOLM TOOLING SVENSKA AB
Box 45
SE-334 21 Anderstorp
Telephone: +46 371 160 15

UDDEHOLM TOOLING SVENSKA AB
Box 148
SE-631 03 Eskilstuna
Telephone: +46 16 15 79 00

UDDEHOLM TOOLING SVENSKA AB
Aminogatan 25
SE-431 53 Mölndal
Telephone: +46 31 67 98 70

UDDEHOLM TOOLING SVENSKA AB
Nya Tanneforsvägen 96
SE-582 42 Linköping
Telephone: +46 13 15 19 90

UDDEHOLM TOOLING SVENSKA AB
Derbyvägen 22
SE-212 35 Malmö
Telephone: +46 40 22 32 05

UDDEHOLM TOOLING SVENSKA AB
Honnörsgatan 16A
SE-352 36 Växjö
Telephone: +46 470 457 90

Switzerland

HERTSCH & CIE AG
General Wille Strasse 19
CH-8027 Zürich
Telephone: +41 44 208 16 66
www.hertsch.ch

Turkey

Head office
ASSAB Korkmaz Celik A.S.
Organize Sanayi Bölgesi
2. Cadde No: 26 Y. Dudullu
34776 Umraniye
Istanbul Turkey
Telephone: +90 216 420 1926-121/124
www.assabkorkmaz.com

America

Argentina

ACEROS BOEHLER UDDEHOLM S.A
Mozart 40
1619-Centro Industrial Garin
Garin-Prov.
AR-Buenos Aires
Telephone: +54 332 7444 440
www.uddeholm.com.ar

Brazil

AÇOS BOHLER-UDDEHOLM DO
BRASIL LTDA- DIV. UDDEHOLM
Estrada Yae Massumoto, 353
CEP 09842-160
BR-Sao Bernardo do Campo - SP Brazil
Telephone: +55 11 4393 4560, 4554
www.uddeholm.com.br

Canada

Head Office & Warehouse
UDDEHOLM
2595 Meadowvale Blvd.
Mississauga, ON L5N 7Y3
Telephone: +1 905 812 9440
www.bucanada.com

Branch Warehouses

UDDEHOLM
3521 Rue Ashby
St. Laurent, QC H4R 2K3
Telephone: +1 514 333 8000

UDDEHOLM
730 Eaton Way - Unit #10
New Westminster, BC V3M 6J9
Telephone: +1 604 525 3354

Heat Treating

THERMO-TECH
2645 Meadowvale Blvd.
Mississauga, ON L5N 7Y4
Telephone: +1 905 812 9440

Colombia

AXXECOL S.A.
Carrera 35 No 13-20
Apartado Aereo 80718
CO-Bogota 6
Telephone: +57 1 2010700
www.axxecol.com

ASTECO S.A.
Carrera 54 No 35-12
Apartado Aereo 663
CO-Medellin
Telephone: +57 4 2320122
www.asteco.com

Dominican Republic

RAMCA, C. POR A.
P-2289
P.O. Box 025650
Miami, Fl. 33102
Telephone: +1 809 682 4011
domrep@assab.com

Ecuador

IVAN BOHMAN C.A.
Apartado 1317
Km 6 1/2 Via a Daule
Guayaquil
Telephone: +593 42 254111

IVAN BOHMAN C.A.
Casilla Postal 17-01370
Quito
Telephone: +593 2 2248001

El Salvador

ACAVISA DE C.V.
25a. Avenida Sur 463
zona 1
Apartado Postal 439
SV-San Salvador
Telephone: +503 22 711700
www.acavisa.com

Guatemala

IMPORTADORA ESCANDINAVA
Apartado postal 11C
GT-Guatemala City, Guatemala
Telephone: +502 23 659270
guatemala@assab.com

Mexico

Head office
ACEROS BOHLER UDDEHOLM S.A.
de C.V.
Calle Ocho No 2, Letra "C"
Fraccionamiento Industrial Alce Blanco
C.P. 52787 Naucalpan de Juarez
MX-Estado de Mexico
Telephone: +52 55 9172 0242
www.bu-mexico.com

Branch office

BOHLER-UDDEHOLM MONTERREY,
NUEVO LEON
Lerdo de Tejada No.542
Colonia Las Villas
MX-66420 San Nicolas de Los Garza,
N.L.
Telephone: +52 81 83 525239

Peru

C.I.P.E.S.A.
Av. Oscar R. Benavides
(ante Colonial) No. 2066
PE-Lima 1
Telephone: +51 1 336 8673
peru@assab.com

U.S.A.

Head Office
UDDEHOLM
4902 Tollview Drive
Rolling Meadows IL 60008
Telephone: 1-847-577-2220
Sales phone: 1-800-638-2520
www.bucorp.com

Region East Warehouse

UDDEHOLM
220 Cherry Street
Shrewsbury MA 01545

Region Central Warehouse

UDDEHOLM
548 Clayton Ct.
Wood Dale IL 60191

Region West Warehouse

UDDEHOLM
9331 Santa Fe Springs Road
Santa Fe Springs, CA 90670

Venezuela

PRODUCTOS HUMAR C.A.
Multicentro Empresarial del Este,
Edf Libertador, Núcleo A.
Piso 9, Of. A-93, Chacao
VE-Caracas 1060
Telephone: +58 212 2655040
humar@assab.com

Other Countries in America

ASSAB INTERNATIONAL AB
Box 42
SE-171 11 Solna, Sweden
Telephone: +46 8 564 616 70
www.assab.se

Asia & Pacific

Australia

BOHLER UDDEHOLM Australia
129-135 McCredie Road
Guildford NSW 2161
Private Bag 14
AU-Sydney
Telephone: +61 2 9681 3100
www.buau.com.au

Bangladesh

ASSAB INTERNATIONAL AB
P.O. Box 17595
Jebel Ali
AE-Dubai
Telephone: +971 488 12165
www.assab.se

North China

Head office
ASSAB Tooling (Beijing) Co Ltd
No.10A Rong Jing Dong Jie
Beijing Economic Development Area
Beijing 100176, China
Telephone: +86 10 6786 5588
www.assabsteels.com

Branch offices

ASSAB Tooling (Beijing) Ltd
Dalian Branch
8 Huanghai Street, Haerbin Road
Economic & Technical Develop. District
Dalian 116600, China
Telephone: +86 411 8761 8080

ASSAB Qingdao Office
Room 2521, Kexin Mansion
No. 228 Liaoning Road, Shibei District
Qingdao 266012, China
Telephone: +86 532 8382 0930

ASSAB Tianjin Office
No.12 Puwangli Wanda Xincheng
Xinyibai Road, Beichen District
Tianjin 300402, China
Telephone: +86 22 2672 0006

Central China

Head office
ASSAB Tooling Technology
(Shanghai) Co Ltd
No. 4088 Humin Road
Xinzhuang Industrial Zone
Shanghai 201108, China
Telephone: +86 21 5442 2345
www.assabsteels.com

Branch offices

ASSAB Tooling Technology
(Ningbo) Co Ltd
No. 218 Longjiaoshan Road
Vehicle Part Industrial Park
Ningbo Economic & Technical Dev.
Zone
Ningbo 315806, China
Telephone: +86 574 8680 7188

ASSAB Tooling Technology
(Chongqing) Co Ltd
Plant C, Automotive Industrial IPark
Chongqing Economic & Technological
Development Zone
Chongqing 401120, China
Telephone: +86 23 6745 5698

South China

Head office
ASSAB Steels (HK) Ltd
Room 1701-1706
Tower 2 Grand Central Plaza
138 Shatin Rural Committee Road
Shatin NT - Hong Kong
Telephone: +852 2487 1991
www.assabsteels.com

Branch offices

ASSAB Tooling (Dongguan) Co Ltd
Northern District
Song Shan Lake Science & Technology
Industrial Park
Dongguan 523808, China
Telephone: +86 769 2289 7888
www.assabsteels.com

ASSAB Tooling (Xiamen) Co Ltd
First Floor Universal Workshop
No. 30 Huli Zone
Xiamen 361006, China
Telephone: +86 592 562 4678

Hong Kong

ASSAB Steels (HK) Ltd
Room 1701-1706
Grand Central Plaza, Tower 2
138 Shatin Rural Committee Road
Shatin NT, Hong Kong
Telephone: +852 2487 1991
www.assabsteels.com

India

ASSAB Sripad Steels LTD
T 303 D.A.V. Complex
Mayur Vihar Ph I Extension
IN-Delhi-110 091
Telephone: +91 11 2271 2736
www.assabsripadsteels.com

ASSAB Sripad Steels LTD
709, Swastik Chambers
Sion-Trombay Road
Chembur
IN-Mumbai-400 071
Telephone: +91 22 2522-7110, -8133

ASSAB Sripad Steels LTD
Padmalaya Towers
Janaki Avenue
M.R.C. Nagar
IN-Chennai-600 028
Telephone: +91 44 2495 2371

ASSAB Sripad Steels LTD
19X, D. P. P. Road
Naktola Post Office
IN-Kolkata-700 047
Telephone: +91 (33) 400 1645

ASSAB Sripad Steels LTD
Ground floor, Plot No 11-6-8
Opp IDPL Factory Out Gate
Balanagar
IN-Hyderabad-500 037
Telephone: +91 (40) 2377 8148

Indonesia

Head office
PT ASSAB Steels Indonesia
Jl. Rawagelam III No. 5
Kawasan Industri Pulogadung
Jakarta 13930, Indonesia
Telephone: +62 21 461 1314
www.assabsteels.com

Branch offices

SURABAYA BRANCH
Jl. Berbek Industri 1/23
Surabaya Industrial Estate, Rungkut
Surabaya 60293, East Java, Indonesia
Telephone: +62 31 843 2277

MEDAN BRANCH
Komplek Griya Riatu Indah
Blok A No.138
Jl. T. Amir Hamzah
Halvetia Timur, Medan 20124
Telephone: +62 61 847 7935/6

BANDUNG BRANCH
Komp. Ruko Bumi Kencana
Jl. Titian Kencana Blok E
No.5 Bandung 40233
Telephone: +62 22 604 1364

TANGERANG BRANCH
Pusat Niaga Cibodas
Blok C No. 7 Tangerang
Telephone: +62 21 921 9596, 551 2732

SEMARANG BRANCH
Jl. Imam Bonjol No.155
R.208 Semarang 50124
Telephone: +62 358 8167

Iran

ASSAB INTERNATIONAL AB
P.O. Box 19395
IR-1517 TEHRAN
Telephone: +98 21 888 35392
www.assabiran.com

Israel

PACKER YADPAZ QUALITY STEELS Ltd
P.O. Box 686
Ha-Yarkon St. 7, Industrial Zone
IL-81106 YAVNE
Telephone: +972 8 932 8182
www.packer.co.il

Japan

UDDEHOLM KK
Atago East Building
3-16-11 Nishi Shinbashi
Minato-ku, Tokyo 105-0003, Japan
Telephone: +81 3 5473 4641
www.assabsteels.com

Jordan

ENGINEERING WAY Est.
P.O. Box 874
Abu Alanda
JO-AMMAN 11592
Telephone: +962 6 4161962
engineeringway@assab.com

Malaysia

Head office
ASSAB Steels (Malaysia) Sdn Bhd
Lot 19, Jalan Perusahaan 2
Batu Caves Industrial Estate
68100 Batu Caves
Selangor Malaysia
Telephone: +60 3 6189 0022
www.assabsteels.com

Branch offices

BUTTERWORTH BRANCH
Plot 146a
Jalan Perindustri Bukit Minyak 7
Kawasan Perindustri Bukit Minyak
14000 Bukit Mertajam, SPT Penang
Telephone: +60 4 507 2020

JOHOR BRANCH
No. 8, Jalan Persiaran Teknologi
Taman Teknologi
81400 Senai
Johor DT, Malaysia
Telephone: +60 7 598 0011

New Zealand

VIKING STEELS
25 Beach Road, Otahuhu
P.O. Box 13-359, Onehunga
NZ-Auckland
Telephone: +64 9 270 1199
www.ssm.co.nz

Pakistan

ASSAB International AB
P.O. Box 17595
Jebel Ali
AE-Dubai
Telephone: +971 488 12165
www.assab.se

Philippines

ASSOCIATED SWEDISH STEELS PHILS Inc.
No. 3 E. Rodriguez Jr., Avenue
Bagong Ilog, Pasig City
Philippines
Telephone: +632 671 1953/2048
www.assabsteels.com

Republic of Korea

Head office
ASSAB Steels (Korea) Co Ltd
116B-8L, 687-8, Kojan-dong
Namdong-ku
Incheon 405-310, Korea
Telephone: +82 32 821 4300
www.assabsteels.com

Branch offices

BUSAN BRANCH
14B-5L, 1483-9, Songjeong-dong
Kangseo-ku, Busan 618-270, Korea
Telephone: +82 51 831 3315

DAEGU BRANCH
Room 27, 7-Dong2 F
Industry Materials Bldg.1629
Sangyeog-Dong, Buk-Ku
Korea-Daegu 702-710
Telephone: +82 53 604 5133

Lebanon

WARDE STEEL & METALS SARL MET
Charles Helou Av, Warde Bldg
P.O. Box 165886
LB-Beirut
Telephone: +961 1 447228
lebanon@assab.com

Saudi Arabia

ASSAB INTERNATIONAL AB
P.O. Box 255092
SA-Riyadh 11353
Telephone: +966 1 4466542
saudiarabia@assab.com

Singapore

Head office Pacific
ASSAB Pacific Pte Ltd
171, Chin Swee Road
No. 07-02, SAN Centre
SG-Singapore 169877
Telephone: +65 6534 5600
www.assabsteels.com

Jurong

ASSAB Steels Singapore (Pte) Ltd
18, Penjuru Close
SG-608616 Singapore
Telephone: +65 6862 2200

Sri Lanka

GERMANIA COLOMBO PRIVATE Ltd.
451/A Kandy Road
LK-Kelaniya
Telephone: +94 11 2913556
www.iwsholdings.com

Syria

WARDE STEEL & METALS SARL MET
Charles Helou Av, Warde Bldg
P.O. Box 165886
LB-Beirut
Telephone: +961 1 447228
lebanon@assab.com

Taiwan

Head office
ASSAB Steels (Taiwan) Co Ltd
No. 112 Wu Kung 1st Rd.
Wu Ku Industry Zone
TW-Taipei 248-87, Taiwan (R.O.C.)
Telephone: +886 2 2299 2849
www.assabsteels.com

Branch offices

NANTOU BRANCH
No. 10, Industry South 5th Road
Nan Kang Industry Zone
Nantou 540-66, Taiwan (R.O.C.)
Telephone: +886 49 225 1702
TAINAN BRANCH
No. 180, Yen He Street,
Yong Kang City
Tainan 710-82, Taiwan (R.O.C.)
Telephone: +886 6 242 6838

Thailand

ASSAB Steels (Thailand) Ltd
9/8 Soi Theedinthai,
Taeparak Road, Bangplee,
Samutprakarn 10540, Thailand
Telephone: +66 2 385 5937,
+66 2 757 5017
www.assabsteels.com

United Arab Emirates

ASSAB INTERNATIONAL AB
P.O. Box 17595
Jebel Ali
AE-Dubai
Telephone: +971 488 12165
www.assab.se

Vietnam

CAM Trading Steel Co Ltd
90/8 Block 5, Tan Thoi Nhat Ward
District 12, Ho Chi Minh City
Vietnam
Telephone: +84 8 5920 920
www.assabsteels.com

Other Asia

ASSAB INTERNATIONAL AB
Box 42
E-171 11 Solna, Sweden
Telephone: +46 8 564 616 70
www.assab.se

Africa

Egypt

UNITED FOR IMPORT AND INDUSTRIAL SUPPLIES
Montaser Project No 20
Flat No 14
Al Ahram Street-El Tabia
EG-Giza Cairo
Telephone: +20 2 7797751
www.assab.se

Kenya

SANDVIK Kenya Ltd
P.O. Box 18264
Post code 00500
KE-Nairobi
Telephone: +254 20 532 866
sandvik@africaonline.co.ke

South Africa

UDDEHOLM Africa (Pty.) Ltd.
P.O. Box 539
ZA-1600 Isando/Johannesburg
Telephone: +27 (11) 974 2791
www.bohler-uddeholm.co.za

Tunisia

MCM Distribution
4 Bis, Rue 8610 - Z.I.
2035 Chargula 1
TN-Tunis
Telephone: +216 71 802479
www.mcm.com.tn

Zimbabwe

Representative office:
UDDEHOLM Africa (Pty.) Ltd.
P.O. Box 539
ZA-1600 Isando/Johannesburg
Telephone: +27 11 974 2781
www.bohler-uddeholm.co.za

Other African Countries

ASSAB INTERNATIONAL AB
Box 42
SE-171 11 Solna, Sweden
Telephone: +46 8 564 616 70
www.assab.se



Network of excellence

Uddeholm is present on every continent. This ensures you high-quality Swedish tool steel and local support wherever you are. Assab is our wholly-owned subsidiary and exclusive sales channel, representing Uddeholm in various parts of the world. Together we secure our position as the world's leading supplier of tooling materials.

Uddeholm is the world's leading supplier of tooling materials. This is a position we have reached by improving our customers' everyday business. Long tradition combined with research and product development equips Uddeholm to solve any tooling problem that may arise. It is a challenging process, but the goal is clear – to be your number one partner and tool steel provider.

Our presence on every continent guarantees you the same high quality wherever you are. Assab is our wholly-owned subsidiary and exclusive sales channel, representing Uddeholm in various parts of the world. Together we secure our position as the world's leading supplier of tooling materials. We act worldwide, so there is always an Uddeholm or Assab representative close at hand to give local advice and support. For us it is all a matter of trust – in long-term partnerships as well as in developing new products. Trust is something you earn, every day.

For more information, please visit www.uddeholm.com or www.assab.com

TRUST IS SOMETHING YOU EARN, EVERY DAY.
STRENGTH IN INNOVATION
WORLDWIDE PARTNERSHIPS
TOUGHNESS AND DURABILITY
RELIABILITY AND KNOWLEDGE
SUPPORTING YOUR BUSINESS
SOLVING PROBLEMS
THE WORLD'S LEADING SUPPLIER
OF TOOLING MATERIALS
ASSAB AND UDDEHOLM
TOGETHER WE SECURE YOUR
POSITION AS THE WORLD'S
LEADING SUPPLIER OF
TOOLING MATERIALS
WE ACT WORLDWIDE, SO
THERE IS ALWAYS AN
UDDEHOLM OR ASSAB
REPRESENTATIVE CLOSE AT
HAND TO GIVE LOCAL
ADVICE AND SUPPORT.
FOR US IT IS ALL A MATTER
OF TRUST – IN LONG-TERM
PARTNERSHIPS AS WELL AS
IN DEVELOPING NEW
PRODUCTS. TRUST IS
SOMETHING YOU EARN,
EVERY DAY.